

## CONVEYOR PULLEY



### **Introduction:**

RMB Knovatech has supplied RMB standard head and tail pulley as well as customised pulley required by customer. Capacities caters from 200-tph plant to 2000 tph or more. To comply with this trend, RMB Knovatech has moved into vertical integration of all types to come up with the latest and most dependable designs and technical know-how. Conveyor pulleys been recognized as a critical component of conveyor, failure of which could lead to extensive damage and down time. Hence special attention has been given to design and develop the most dependable pulleys. The range of belt conveyor pulleys manufactured today in RMB Knovatech comes in three basic categories, i.e.,

- Standard construction pulleys
- Heavy-duty construction pulleys
- Extra heavy-duty construction pulleys.

### **Pulley shells**

Pulley shells are accurately rolled from weldable quality steel. Tolerances are maintained strictly within limits specified in IS: 8531.

### **Pulley shafts**

Special machines ensure accuracy and consistency for machine shafts. In case, locking elements are used, sophisticated machines are available in shop, to achieve a high degree of surface finish and minimize ovality to ensure positive stress distribution. All shafts are ground to close tolerance where the bearing sits.

### **Bearing blocks**

Bearing with bearing blocks can be supplied along with pulleys, with 2 or 4 mounting holes. Variety of seals can be provided depending on degree of protection required and duty involved.

### **Balancing**

All RMB pulleys are statically balanced. Dynamically balanced pulleys are supplied upon request at extra cost.

### **Design**

A special computer program has been evolved to optimize on design and obviates any calculation errors. Pulleys are designed to cater to over load forces of short duration.

### **Quality**

To ensure the best quality and dependability, a rigid form of stage inspection is enforced, starting with raw materials to component checking and final assembly.

### **Pulley diameters and face widths**

Pulley diameters and face width dimensions are adopted as per IS:8531. However, the same can be supplied to comply with customer requirements.

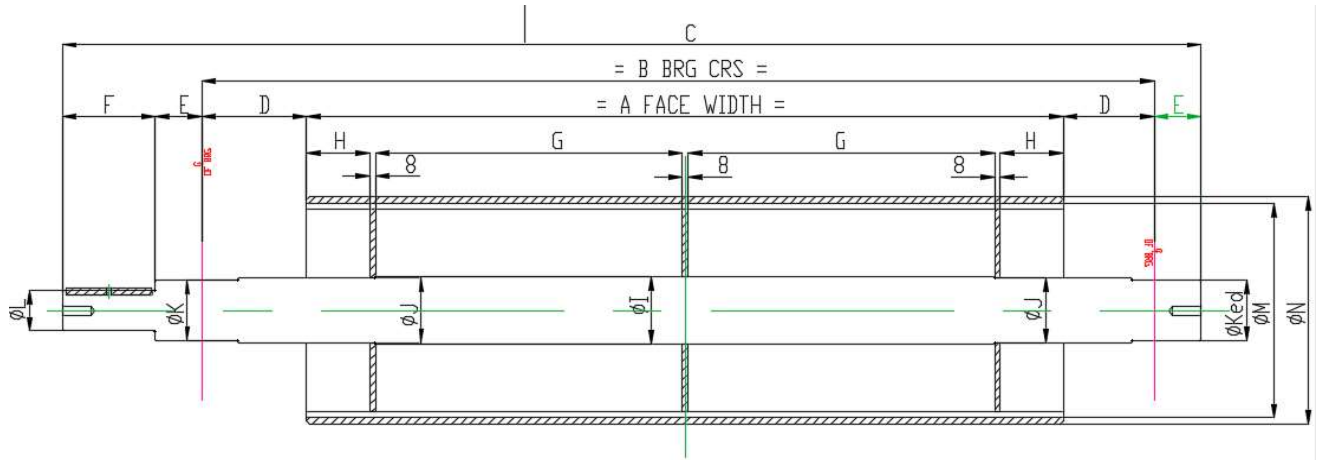
### **Crowning on pulley face**

For long conveyors, where the belt tensions are high, the crowning pulley is injurious to the belt and subsequently reduces belt life. In view of synthetic belts used now, and with deep trough conveyor idlers, crowning on pulley is a redundant feature and hence it is not recommended. However, if required by customer, crowning can be provided on pulleys as per IS: 8531.

### **Lagged pulleys**

RMB can supply pulleys with hot vulcanized rubber lagging, plain or grooved, as required by client. Different patterns of grooving such as herringbone or diamond can be provided to increase tractive friction under dirty or wet conditions. Diamond grooves have the advantage of being installed in any orientation, regardless of belt direction.

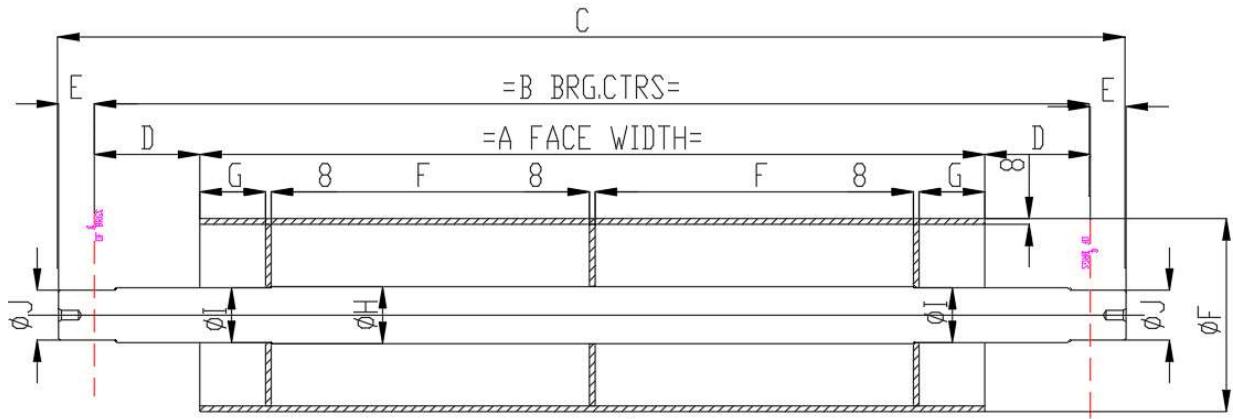
**RMB STANDARD HEAD PLEY DIMENSION: -**



**Below Chart is duly fill By Customer**

SI No.	DIMENSION IN MMM	BELT WIDTH 500 MM	BELT WIDTH 650 MM	BELT WIDTH 800 MM	BELT WIDTH 1000 MM
1	A				
2	B				
3	C				
4	D				
5	E				
6	F				
7	G				
8	H				
9	I				
10	J				
11	K				
12	L				
13	M				
14	N				
15	Bearing				
16	Gear Box				

**RMB STANDARD HEAD PLLEY DIMENSION: -**



**Below Chart is duly fill By Customer**

Sl No.	DIMENSION IN MMM	BELT WIDTH 500 MM	BELT WIDTH 650 MM	BELT WIDTH 800 MM	BELT WIDTH 1000 MM
1	A				
2	B				
3	C				
4	D				
5	E				
6	F				
7	G				
8	H				
9	I				
10	J				
11	Bearing				

